

5th Edition

**JACKSON**  
**INDUSTRIES**



**Flexible  
Hose  
Solutions**

**Fluoropolymer  
Hose**

**Our Flexibility  
Is Your Strength**

**USHOSE**   
**CORPORATION**  
PART OF THE AMNITEC GROUP



## THE JACKSON ADVANTAGE

US Hose is part of the worldwide network of The AmniTec Group of companies. We offer engineered solutions that address vibration, thermal, or pressure-related problems as well as applications involving the transfer of liquids or gases. The hose and fittings included in this catalog are precisely manufactured and coupled to assure unequalled quality and immediate response to your needs.

Rapid quotation and delivery response to even the most difficult applications are our specialties. We stock and supply standard medium pressure, ultra high pressure, convoluted, smooth-bore, rubber-covered, and large bore fluoropolymer hoses with their associated fittings, adapters, and accessories.

This catalog includes our full product line of chemical transfer and smooth bore hoses as well as associated products.

## THE FLUOROPOLYMER ADVANTAGE

**Chemical Resistance** - Inert to practically all commercial chemicals, acids, alcohols, coolants, elastomers, petroleum compounds, solvents, vinyls, synthetic lubricants, & hydraulic fluids.

**Flex & Shock Resistance** - Not affected by continuous flexing, vibration, or impulse - withstands alternating cold and heat cycling.

**High Flow Rates** - Low coefficient of friction with anti-stick properties insures continuous lower pressure drop during service with a good pressure rating and full vacuum.

**Light Weight** - Easier to move, handle, and install than rubber hose with a comparable burst pressure rating - ideal as pigtail in gas handling and pneumatic systems where dew point must be low.

**Non-Adhesive** - Handles substances such as adhesives, asphalt, dyes, grease, glue, latex, lacquers, and paints - no carbon build up when used as a compressor discharge line.

**Non-Contaminating** - Will not contaminate material, fluid, or gas, non-conductive PTFE is FDA approved for food handling and pharmaceutical applications.

**Resists Deterioration** - Impervious to weather and can be stored for long periods without aging - will not age during service.

**Steam Compatibility** - Absorbs no moisture - rated for steam to 250 psi (406°F) - has low volumetric expansion characteristics - easy to clean and sterilize.

## TABLE OF CONTENTS

Medium Pressure Smooth Bore Hose of PTFE ( <b>SB Series Hose</b> ).....	3
MasterCrimp Fittings for Smooth Bore Hose .....	4-6
Adapters .....	6-7
Ultra High Pressure PTFE Hose ( <b>Dense-Pac Hose</b> ) .....	8
High Pressure PTFE Hose ( <b>58 Series Hose</b> ) .....	9
Rubber Covered FEP/PFA Hose ( <b>Jack-Chem Hose</b> ) .....	10
Convoluted Hose of Multiple Layers of PTFE ( <b>WCV/BCV</b> ) .....	11
Polypropylene Braided Convoluted PTFE Hose ( <b>PWCV/PBCV Series</b> ) .....	12
Open Pitch Extruded Convoluted PTFE Hose ( <b>WCO/BCO Series</b> ) .....	13
Convoluted & Jack-Chem Fittings .....	14-15
Heavy Wall Hose of Convoluted PTFE TUBE with Flared Tube ( <b>Jack-Flex Hose</b> ) .....	16
Metal Hose Lined with Smooth-Bore PTFE ( <b>MTLC Hose</b> ) .....	17
Protective Hose Coverings .....	18
Standard Thread & Flange Sizes .....	19
Chemical Resistance Data .....	20-23 (PTFE=Polytetrafluoro-ethylene).



815 Forestwood Drive  
Romeoville, Illinois 60446

Web Site: [www.ushosecorp.com](http://www.ushosecorp.com)

E-Mail: [customersupport@ushose.net](mailto:customersupport@ushose.net)

Teflon® is a registered trademark of DuPont.

## Medium Pressure Smooth Bore Hose of PTFE SB Series • SB-SERIES

### Construction

The Jackson smooth bore hose is constructed of an extruded inner-core of virgin PTFE or carbon black static dissipative PTFE with type 304 stainless steel wire braid reinforcement. The braid acts as a pressure carrier and protective covering. Jackson smooth bore hose is found in many of the toughest service applications, handling "problem" fluids such as acids, solvents, fuels, and chemicals of all types. Available with thin or heavy wall tubing of PTFE (polytetrafluoro-ethylene).



### Applications

- Chemical and Acid Transfer
- Pharmaceuticals
- Food Products
- Steam Lines/Tire Presses
- High Temperature Hydraulic/Air Applications
- Pulp and Paper
- Fuel and Lubricant
- Glass Manufacturing
- Waste Water or Slurry

### Benefits

- High working and burst pressures.
- Most economical of all hoses lined with PTFE.
- The low-friction surface of smooth bore hose provides for high flow rates.
- Easily drained and/or cleaned.
- Temperature Rating: -65° F (-54°C) to +450°F (+230°C)

Part Number		Nominal ID	Actual Size		Maximum Working Pressure	Minimum Burst Pressure	Minimum Bend Radius	Approximate Weight/Ft.
White	Black		ID	OD				
S-3	S-3 Blk	3/16"	.125"	.23"	3000 PSI	12000 PSI	2.0"	.050 lbs.
S-4	S-4 Blk	1/4"	.19"	.30"	3000 PSI	12000 PSI	2.0"	.060 lbs.
S-5	S-5 Blk	5/16"	.25"	.37"	3000 PSI	12000 PSI	2.3"	.070 lbs.
S-5ZH		5/16"	.24"	.45"	4350 PSI	17400 PSI	2.5"	.100 lbs.
S-6	S-6 Blk	3/8"	.32"	.40"	2500 PSI	10000 PSI	3.9"	.090 lbs.
S-7*		3/8"	.37"	.50"	2250 PSI	9000 PSI	4.5"	.105 lbs.
S-8	S-8 Blk	1/2"	.41"	.52"	2000 PSI	8000 PSI	4.7"	.115 lbs.
S-10	S-10 Blk	5/8"	.50"	.59"	1750 PSI	7000 PSI	5.3"	.150 lbs.
S-12	S-12 Blk	3/4"	.62"	.80"	1500 PSI	6000 PSI	6.5"	.225 lbs.
S-14*		3/4"	.77"	.89"	1100 PSI	4400 PSI	7.4"	.225 lbs.
S-16	S-16 Blk	1"	.87"	1.05"	1000 PSI	4000 PSI	7.8"	.285 lbs.
S-16Z	S-16Z Blk	1"	.87"	1.03"	1250 PSI	5000 PSI	9.0"	.475 lbs.
S-18*		1"	1.00"	1.18"	900 PSI	3600 PSI	9.8"	.335 lbs.
S-20Z	S-20Z Blk	1-1/4"	1.13"	1.38"	1000 PSI	4000 PSI	11.0"	.585 lbs.

\*Available only with thin wall tubing.

# MasterCrimp Smooth Bore Fittings

US Hose manufactures and inventories over 500 sizes and styles of fittings. Fitting materials consist of carbon steel, stainless steel, brass, or a combination of materials.

**We will manufacture custom fittings to your specifications.** Contact our customer service department for more information about this service.

## PERMANENT CRIMP FITTINGS

### Male Pipe Brass



### Male Pipe Stainless



### Male Pipe Carbon



Male Pipe Fittings - Brass	
Part No.	Description-Hose Size
0304TW	MNPT (1/8-27) - 4
0504TW	MNPT (1/4-18) - 4
0505TW	MNPT (1/4-18) - 5
0305TW	MNPT (1/8-27) - 5
0306TW	MNPT (1/4-18) - 6
0506TW	MNPT (3/8-18) - 6
0308TW	MNPT (3/8-18) - 8
0508TW	MNPT (1/2-14) - 8
0510TW	MNPT (1/2-14) - 10
0512TW	MNPT (3/4-14) - 12
0516TW	MNPT (1-11.5) - 16
0516Z	MNPT (1-11.5) - 16Z

Male Pipe Fittings - 303 Stainless	
Part No.	Description-Hose Size
1704TW	MNPT (1/8-27) - 4
2004TW	MNPT (1/4-18) - 4
2005TW	MNPT (1/4-18) - 5
1705TW	MNPT (1/8-27) - 5
1706TW	MNPT (1/4-18) - 6
2006TW	MNPT (3/8-18) - 6
1708TW	MNPT (3/8-18) - 8
2008TW	MNPT (1/2-14) - 8
2010TW	MNPT (1/2-14) - 10
2012TW	MNPT (3/4-14) - 12
2016TW	MNPT (1-11.5) - 16
2016Z	MNPT (1-11.5) - 16Z
2020Z	MNPT (1 1/4-11.5) - 20Z

Male Pipe Fittings - Carbon Steel	
Part No.	Description-Hose Size
0904TW	MNPT (1/8-27) - 4
1004TW	MNPT (1/4-18) - 4
1005TW	MNPT (1/4-18) - 5
0905TW	MNPT (1/8-27) - 5
0906TW	MNPT (1/4-18) - 6
1006TW	MNPT (3/8-18) - 6
0908TW	MNPT (3/8-18) - 8
1008TW	MNPT (1/2-14) - 8
1010TW	MNPT (1/2-14) - 10
1012TW	MNPT (3/4-14) - 12
1016TW	MNPT (1-11.5) - 16
1016Z	MNPT (1-11.5) - 16Z
1020Z	MNPT (1 1/4-11.5) - 20Z

316 Stainless Steel also available

### Female Swivel Brass



### Female Swivel Stainless



### Female Swivel Carbon



JIC 37° / SAE 45° Female Swivel Fittings	
Part No.	Description-Hose Size
3404TW	JIC/SAE SWIVEL (1/8-27) - 4
3504TW	JIC/SAE SWIVEL (7/16-20) - 4
3505TW	JIC/SAE SWIVEL (1/2-20) - 5
3506TW	JIC (9/16-18) - 6
3606TW	SAE SWIVEL (5/8-18) - 6
3508TW	JIC/SAE SWIVEL (3/4-16) - 8
3510TW	JIC/SAE SWIVEL (7/8-14) - 10
3512TW	JIC (1 1/16-12) - 12
3612TW	SAE SWIVEL (1 1/16-14) - 12
3516TW	JIC (15/16-12) - 16
3516Z	JIC (1 5/16-12) - 16Z

JIC Swivel Fittings - 303 Stainless	
Part No.	Description-Hose Size
*4003TW	37 JIC SWIVEL (3/8-24) - 3
*4303TW	37 JIC SWIVEL (7/16-20) - 3
3704TW	37 JIC SWIVEL (3/8-24) - 4
4004TW	37 JIC SWIVEL (7/16-20) - 4
*4905TW	37 JIC SWIVEL (7/16-20) - 5
4005TW	37 JIC SWIVEL (1/2-20) - 5
4006TW	37 JIC SWIVEL (9/16-18) - 6
4008TW	37 JIC SWIVEL (3/4-16) - 8
4010TW	37 JIC SWIVEL (7/8-14) - 10
4012TW	37 JIC SWIVEL (1 1/16-12) - 12
4016TW	37 JIC SWIVEL (1 5/16-12) - 16
4016Z	37 JIC SWIVEL (1 5/16-12) - 16Z
4020Z	37 JIC SWIVEL (1 5/8-12) - 20Z

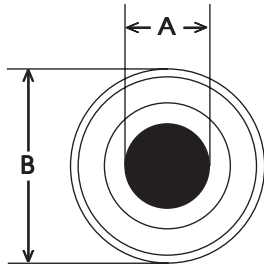
JIC Swivel Fittings - Carbon Steel	
Part No.	Description-Hose Size
3004TW	37 JIC SWIVEL (7/16-20) - 4
2905TW	37 JIC SWIVEL (7/16-20) - 5
3005TW	37 JIC SWIVEL (1/2-20) - 5
3006TW	37 JIC SWIVEL (9/16-18) - 6
*3007TW	37 JIC SWIVEL (9/16-18) - 7N
3008TW	37 JIC SWIVEL (3/4-16) - 8
3010TW	37 JIC SWIVEL (7/8-14) - 10
3012TW	37 JIC SWIVEL (1 1/16-12) - 12
3016TW	37 JIC SWIVEL (1 5/16-12) - 16
3016Z	37 JIC SWIVEL (1 5/16-12) - 16Z
3020Z	37 JIC SWIVEL (1 5/8-12) - 20Z
3206TW	SAE SWIVEL (5/8-18) - 6
3212TW	SAE SWIVEL (1 1/16-14) - 12

\* NEW

\* NEW

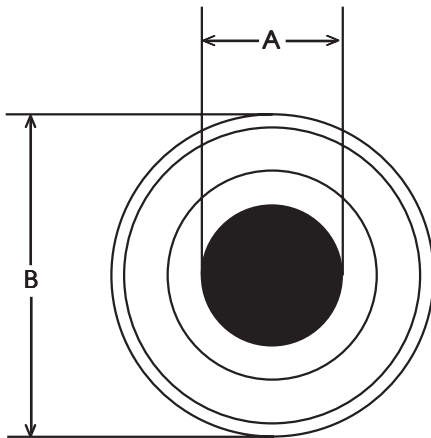
# MasterCrimp Smooth Bore Fittings

## SANITARY TABLE



### MINI SANITARIES

Size	A	B
1/2"	0.375	0.984
3/4"	0.625	0.984



### STANDARD SANITARIES

Size	A	B	Bore Thru
1/2"	0.86	1.984	0.375
3/4"	0.86	1.984	0.609
1"	0.86	1.984	
1 1/2"	1.36	1.984	
2"	1.745	2.5	
3"	2.55	3.576	

A = OPENING ID • B = FACE OD

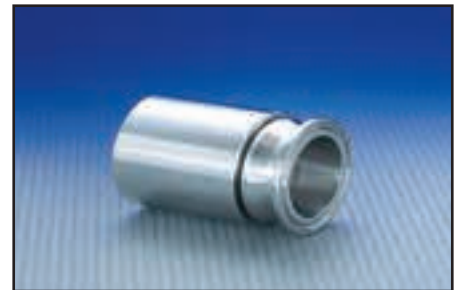
## SANITARY FITTINGS

### Mini Sanitary



Available Materials:  
316 Stainless Steel

### Sanitary



Available Materials:  
316 Stainless Steel

## CRIMP FITTINGS FOR SMOOTH BORE HOSE

# MasterCrimp Assembly System

### *Fabricating Smooth Bore PTFE Hose Assemblies Is Now Fast, Easy & Reliable*

- Complete fitting alloy selection in stock and ready for fast delivery:  
- Carbon Steel -    - Brass -    - Stainless Steel -
- **MasterCrimp saves on your inventory costs** by offering you a single fitting that will fit both thin and heavy wall smooth bore hose.
- Simple assembly process **minimizes tooling & labor costs.**



After hose is cut to length, MasterCrimp ferrules are designed to slide on either by hand or with an optional collar assembly tool. One size collar fits both thin and heavy wall hose.



Easy insertion of the barbed hose end by hand. No time is wasted with finding and loading fittings in tool fixtures.



Straight crimp on the entire length of the ferrule. Jackson MasterCrimp fittings have a clean, smooth look that is appealing to all types of customers.

# MasterCrimp Smooth Bore Fittings

## SPECIAL APPLICATION FITTINGS

Brass Female Pipe



Hose Size	Part No.	Pipe Thread
-5	0405TW	1/4" - 18

Stainless Female Pipe



Hose Size	Part No.	Pipe Thread
-5	2405TW	1/4" - 18



Description	Hose Size	Part No.	Thread Size
Power Trim 45°	-4	PT-45-4	3/8-24
Power Trim 90°	-4	PT-90-4	3/8-24
Power Trim Straight	-4	PT-S-4	3/8-24
Paint Spray Swivel	-5	1505TW	1/4" NPS

Power Trim fittings are available in 304 Stainless Steel. Paint Spray Swivel available in Carbon Steel.



Tube End Fittings - 303 Stainless	
Part No.	Description-Hose Size
4804TW	1/4" OD Tube End - 4
4806TW	3/8" OD Tube End - 6
4808TW	1/2" OD Tube End - 8
4812TW	3/4" OD Tube End - 12

## JACKSON SMOOTH BORE ASSEMBLIES








Our modern production cell for smooth bore assemblies provides fast turnaround and offers tremendous value to our customers business by eliminating the need for users to stock bulk products. Jackson inventories are purposely maintained at high levels so that we can respond in a short time to your installation requirements.

Depending on the application your assemblies can be tested with water or nitrogen gas with a complete certificate of test. Our in house services also include cleaning, tagging and bagging required for high purity transfer conditions.

## 37° JIC to NPT PIPE THREAD ADAPTERS

Adapters are available in brass, carbon steel, and 300 Series Stainless Steel.  
Additional adapters are available - consult the factory for details.

							
Pipe Thread	JIC Straight Thread	JIC Dash Size	Male Adapter Part#	Male 90 Elbow Part #	Male 45 Elbow Part #	Female Adapter Part #	Female 90 Elbow Part #
1/8-27	3/8-24	3	1003-1	9003-1	4503-1	1003-1F	9003-1F
1/8-27	7/16-20	4	1004-1	9004-1	4504-1	1004-1F	9004-1F
1/4-18	7/16-20	4	1004-2	9004-2	4504-2	1004-2F	9004-2F
3/8-18	7/16-20	4	1004-3	9004-3	4504-3	1004-3F	9004-3F
1/8-27	1/2-20	5	1005-1	9005-1	4505-1	1005-1F	9005-1F
1/4-18	1/2-20	5	1005	9005	4505	1005-F	9005-F
3/8-18	1/2-20	5	1005-2	9005-2	4505-2	1005-2F	9005-2F
1/4-18	9/16-18	6	1006-1	9006-1	4506-1	1006-1F	9006-1F
3/8-18	9/16-18	6	1006-2	9006-2	4506-2	1006-2F	9006-2F
1/2-14	9/16-18	6	1006-3	9006-3	4506-3	1006-3F	9006-3F
1/4-18	3/4-16	8	1008	9008	4508	1008-F	9008-F
3/8-18	3/4-16	8	1008-1	9008-1	4508-1	1008-1F	9008-1F
1/2-14	3/4-16	8	1008-2	9008-2	4508-2	1008-2F	9008-2F
3/4-14	3/4-16	8	1008-3	9008-3	4508-3	1008-3F	9008-3F
3/8-18	7/8-14	10	1010-1	9010-1	4510-1	1010-1F	9010-1F
1/2-14	7/8-14	10	1010	9010	4510	1010-F	9010-F
3/4-14	7/8-14	10	1010-2	9010-2	4510-2	1010-2F	9010-2F
1/2-14	1-1/16 - 12	12	1012-1	9012-1	4512-1	1012-1F	9012-1F
3/4-14	1-1/16 - 12	12	1012	9012	4512	1012-F	9012-F
1-11-1/2	1-1/16 - 12	12	1012-2	9012-2	4512-2	1012-2F	9012-2F
3/4-14	1-5/16 - 12	16	1016-1	9016-1	4516-1	1016-1F	9016-1F
1 - 11-1/2	1-5/16 - 12	16	1016	9016	4516	1016-F	9016-F
1-1/4 - 11-1/2	1-5/16 - 12	16	1016-2	9016-2	4516-2	1016-2F	9016-2F
1 - 11-1/2	1-5/8 - 12	20	1020-1	9020-1	4520-1	1020-1F	9020-1F
1-1/4 - 11-1/2	1-5/8 - 12	20	1020	9020	4520	1020-F	9020-F
1-1/2 - 11-1/2	1-5/8 - 12	20	1020-2	9020-2	4520-2	1020-2F	9020-2F
1-1/2 - 11-1/2	1-7/8 - 12	24	1024	9024	4524	1024-F	9024-F
2 - 11-1/2	2-1/2 - 12	32	1032	9032	4532	1032-F	9032-F

Prefix Part Number "B" for Brass, "C" for Carbon Steel, and "S" for 300 Series Stainless Steel.  
Please consult the factory for additional sizes, shapes, and materials.

# DENSE-PAC HOSE • Ultra High Pressure Hose PTFE



## Construction

The Jackson Dense-Pac (1000 Series) hose is constructed of an inner core of carbon black static dissipative PTFE. A multitude of stainless steel wires are braided together, forming a single braid of protection. In larger sizes (-12 through -24), an additional layer of braid is added between the PTFE inner core and the outer braid. The post-sintered tube increases its density, reducing effusion in pneumatic applications. NEW - For liquid and hydraulic applications, a non-sintered PTFE tube provides lower costs without sacrificing performance.

Fittings: Jackson's Dense-Pac comes standard with 300 series stainless steel JIC 37° female swivels. Jackson offers a wide selection of other styles for OEM and compressed gas applications.

## Applications Benefits

- |   |  |
|---|--|
| <ul style="list-style-type: none"> <li>• High Temperature Hydraulics – Steel Mills</li> <li>• High Pressure Chemical Transfer</li> <li>• Two Part Reaction Injection Molding</li> <li>• Hot Melt Glue (Boxes &amp; Packaging)</li> <li>• High Pressure Gas (Pigtail)</li> <li>• Life Support System</li> <li>• Oil Field Applications</li> <li>• High Temperature Heated Hose Applications</li> <li>• Urethane Transfer Applications</li> </ul> | <ul style="list-style-type: none"> <li>• Extreme high pressure hose.</li> <li>• Smooth bore improves flow rates.</li> <li>• Resists kinking in service.</li> <li>• High durability and unlimited shelf life.</li> <li>• Sizes up to 1-1/2" I.D.</li> <li>• Lightweight with tight bend radius.</li> <li>• Meets requirements of SAE 100R8 and 100R9.</li> <li>• Temperature Rating: -65°F (-54°C) to +400°F (+204°C).</li> </ul> |
|---|--|

**Please notify the factory if this hose will be used in a moisture-sensitive application.**

Part #	Nominal I.D.	Actual Size		Max. Working Pressure*	Test Pressure	Min. Burst Pressure*	High Temp. Burst Pressure	Min. Bend Radius	Approx. Weight Per. Foot
		I.D.	O.D.						
S-4DP	1/4"	.22"	.39"	5000 PSI	10000 PSI	16000 PSI	12000 PSI	1.50"	.10 lbs.
S-6DP	3/8"	.31"	.49"	5000 PSI	10000 PSI	16000 PSI	12000 PSI	2.50"	.16 lbs.
S-8DP	1/2"	.40"	.62"	5000 PSI	10000 PSI	16000 PSI	12000 PSI	2.88"	.23 lbs.
S-10DP	5/8"	.50"	.73"	5000 PSI	10000 PSI	16000 PSI	12000 PSI	3.25"	.32 lbs.
S-12DP	3/4"	.62"	.99"	5000 PSI	10000 PSI	16000 PSI	12000 PSI	3.88"	.66 lbs.
S-16DP	1"	.87"	1.27"	5000 PSI	10000 PSI	16000 PSI	9000 PSI	5.00"	1.02 lbs.
S-20DP	1-1/4"	1.12"	1.66"	5000 PSI	10000 PSI	16000 PSI	9000 PSI	12.00"	1.85 lbs.
S-24DP	1-1/2"	1.38"	1.90"	4000 PSI	8000 PSI	12000 PSI	9000 PSI	14.00"	1.91 lbs.

\*Minimum burst pressures calculated at 70°F. \*Non-Impulse Applications. For impulse applications, working pressure is 3000 PSI. High temperature pressures calculated at 400°F; working pressure drops to 3000 PSI. Please contact the factory. For gas and breathing air applications specify DP post-sintered hose only.

## Construction

58 Series hose is constructed of carbon black static dissipative innercore of PTFE with layers of spiral wrap between two layers of braid, which make this hose the premiere in heavy-duty ultra high pressure hose of Teflon®. The post-sintered tube increases its density, reducing effusion in pneumatic applications.

Jackson 58 Series comes standard with type 300 stainless steel JIC swivels. Male or female NPT adapters are available. Solid female NPT fittings in 1/4" are also an option.



## Applications

- High Temperature Hydraulics
- High Pressure Phosphate Ester Applications
- High Pressure Chemical Transfer
- Two Part Epoxy (RIMM)
- Hot Melt Glue (Boxes & Packaging)
- High Pressure Gas Applications (Pigtails)
- Life Support Systems
- Oil Field Applications
- High Temperature Heated Hose Applications

## Benefits

- Extreme high pressure hose.
- Smooth bore improves flow rates.
- Resists kinking in service.
- Unlimited shelf life.
- Suitable for impulse service.
- Meets requirements of SAE 100R8 and 100R9.
- Temperature Rating: -65°F (-54°C) to +400°F (+204°C)

Part #	Nominal I.D.	Actual Hose Size		Max. Working Pressure	Test Pressure	Min. Burst Pressure*	Min. Bend Radius	Approx. Weight Per. Foot
		I.D.	O.D.					
S-4HP	1/4"	.23"	.50"	6000 PSI	9000 PSI	24000 PSI	3.00"	.24 lbs.
S-6HP	3/8"	.30"	.62"	6000 PSI	9000 PSI	24000 PSI	5.00"	.40 lbs.
S-8HP	1/2"	.40"	.74"	6000 PSI	9000 PSI	24000 PSI	5.75"	.49 lbs.
S-10HP	5/8"	.53"	.91"	4000 PSI	6000 PSI	12000 PSI	6.50"	.68 lbs.
S-12HP	3/4"	.65"	1.07"	4000 PSI	6000 PSI	12000 PSI	7.75"	.94 lbs.
S-16HP	1"	.88"	1.39"	4000 PSI	6000 PSI	12000 PSI	9.75"	1.50 lbs.

\*Minimum burst pressures calculated at 70°F. S-4 through S-8 are rated at 400°F. S-10 through S-16: at 400°F, working pressure is reduced to 3000 PSI. For high temperature pressures, please contact the factory.

# Rubber Covered Hose of FEP/PFA • JACK-CHEM

## Construction

Jack-Chem has been custom engineered for lasting service in the most demanding applications. Jack-Chem starts with a smooth; non-stick FDA approved white FEP fluoropolymer. Two plies of synthetic rubber reinforced with horizontal fabric braid are permanently bonded to the FEP tube. A wire helix is included to support the shape in full vacuum service and to prevent kinking. This provides a grounding path for electrical charges through the exterior body of the hose. For materials that create static buildup on the inner FEP liner, a black conductive FEP is required to dissipate the charge. The entire hose is protected by an abrasion resistant rubber cover that will not fade or discolor with age and is also weather resistant.



NEW - PFA & PTFE Liners now available

\*White Fluoropolymers are FDA approved, black conductive materials are not.

## Applications

- Chemical Transfer
- Acid Transfer
- Pharmaceutical Manufacturing
- Photo Emulsions
- Food Processing
- Large Diameter Smooth Bore
- Tank Truck
- Slurry/Waste

## Benefits

- Smooth bore up to 4" I.D.
- Less turbulence created by smooth bore provides better flow rates.
- Thermal insulation.
- Easily drained/steam cleanable.
- Feel of a rubber hose versus handling braided wire.
- Rated up to 550 PSI working pressure.
- Temperature Rating: -40°F (-40°C) to +250°F (+120°C)

Part Number	Nominal Hose Size		Maximum Working Pressure *	Minimum Burst Pressure	Vacuum Rating *	Minimum Bend Radius	Approximate Weight per Ft.	
	White	Black						I.D.
JC-08	JCB-08	0.50"	0.87"	550 PSI	2200 PSI	Full	3.0"	.33 lbs.
JC-12	JCB-12	0.75"	1.25"	450 PSI	1800 PSI	Full	3.5"	.60 lbs.
JC-16	JCB-16	1.00"	1.50"	450 PSI	1800 PSI	Full	4.0"	.73 lbs.
JC-24	JCB-24	1.50"	2.00"	400 PSI	1600 PSI	Full	8.5"	1.20 lbs.
JC-32	JCB-32	2.00"	2.50"	375 PSI	1500 PSI	Full	10.5"	1.45 lbs.
JC-48	JCB-48	3.00"	3.50"	175 PSI	700 PSI	Full	25.0"	2.40 lbs.
JC-64	JCB-64	4.00"	4.50"	150 PSI	600 PSI	Full	42.0"	3.55 lbs.

\* All pressures and vacuum ratings calculated at 70°F.

# WCV/BCV SERIES • Convoluted Hose with Multiple Layers of PTFE



## Construction

Jackson Industries WCV Series has a white, helical, convoluted inner tubing of multiple layers of PTFE, which is reinforced with PTFE-impregnated fiberglass and a stainless steel braid. The BCV series has a black, carbon filled, conductive inner tubing which serves to dissipate electrostatic charges. For high vacuum applications (HV) the hose is supported with a helical spring to resist collapse.

## Applications Benefits

- Chemical Transfer
- Acid Transfer
- Tire Mold Equipment
- Purified Water
- Reverse Osmosis Systems
- Fill Lines
- Air Compressors
- Waste Water & Slurry

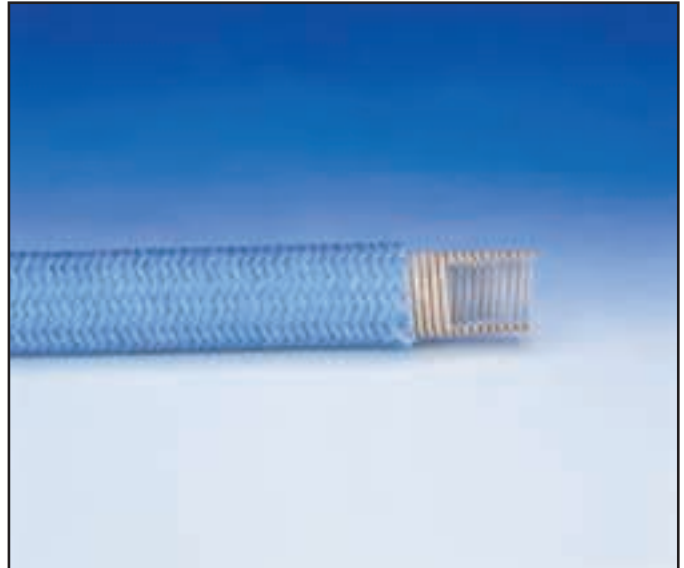
- Very flexible, requiring very little force to deflect.
- Tightest or smallest bend radius.
- High working pressures.
- Light weight per foot.
- Full vacuum rating available.
- Temperature Rating: -65°F (-54°C) to +400°F (+230°C)

Part Number		Nominal Hose Size		Max. Working Pressure	Min. Burst Pressure	Vacuum Rating (HG)	Min. Bend Radius	Approx. Weight Per Foot
White	Black	I.D.	O.D.					
WCV-08	BCV-08	0.50"	0.82"	1000 PSI	4000 PSI	28"	1.0"	.20 lbs.
WCV-10	BCV-10	0.62"	0.91"	1000 PSI	4000 PSI	28"	2.0"	.26 lbs.
WCV-12	BCV-12	0.75"	1.07"	1000 PSI	4000 PSI	28"	2.5"	.33 lbs.
WCV-16	BCV-16	1.00"	1.34"	1000 PSI	4000 PSI	25"	3.0"	.43 lbs.
WCV-20	BCV-20	1.25"	1.57"	1000 PSI	4000 PSI	20"	6.2"	.53 lbs.
WCV-24	BCV-24	1.50"	1.81"	750 PSI	3000 PSI	12"	7.5"	.65 lbs.
WCV-32	BCV-32	2.00"	2.32"	500 PSI	1800 PSI	5"	10.0"	.73 lbs.
WCV-24HV	BCV-24HV	1.50"	1.85"	750 PSI	3000 PSI	Full	7.5"	.89 lbs.
WCV-32HV	BCV-32HV	2.00"	2.42"	500 PSI	2000 PSI	Full	10.0"	1.19 lbs.
WCV-48HV	BCV-48HV	3.00"	3.68"	200 PSI	1000 PSI	Full	15.0"	2.30 lbs.

All pressures and vacuum ratings calculated at 70°F. Please consult with factory on availability of larger sizes.

## Construction

The PWCV series has been designed for use where hose flexibility is required but stainless steel braid is unsuitable. The PWCV series is constructed white, helical, convoluted PTFE tubing which is reinforced with a polypropylene overbraid. The PBCV series has a black conductive inner tubing which serves to dissipate electrostatic charges.



## Applications

- Exotic Chemical transfer
- Metering or weighing applications
- Soda bottle filling
- Applications requiring frequent handling
- Potable water
- Applications with exposure to salt water
- Applications requiring high flexibility

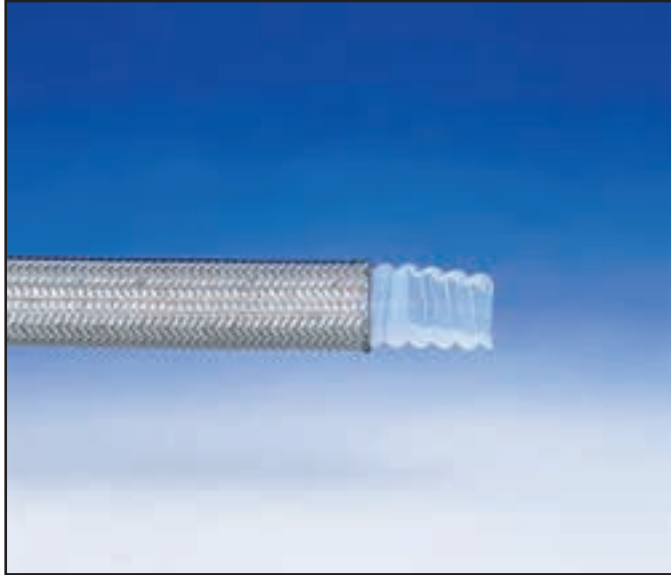
## Benefits

- User-friendly braid.
- Braid is compatible with chlorinated solvents and salt water.
- Will not conduct electricity.
- Light weight per foot.
- Very flexible, requiring very little force to deflect.
- Polypropylene braid compatible with chemicals which attack stainless steel.
- Temperature Rating: -65°F (-54°C) to +250°F (+120°C)

Part Number		Nominal Hose Size		Max. Working Pressure	Min. Burst Pressure	Vacuum Rating (HG)*	Min. Bend Radius	Approx. Weight Per Foot
White	Black	ID	OD					
PWCV-08	PBCV-08	0.50"	0.82"	350 PSI	1500 PSI	28"	2.9"	.15 lbs.
PWCV-12	PBCV-12	0.75"	1.07"	300 PSI	1400 PSI	28"	3.4"	.24 lbs.
PWCV-16	PBCV-16	1.00"	1.34"	275 PSI	1360 PSI	25"	4.0"	.27 lbs.
PWCV-24	PBCV-24	1.50"	1.81"	250 PSI	1300 PSI	12"	6.8"	.43 lbs.
PWCV-32	PBCV-32	2.00"	2.32"	200 PSI	1200 PSI	5"	8.7"	.57 lbs.

\*All pressures and vacuum ratings calculated at 70°F. Contact the factory for vacuum rating.

# WCO/BCO SERIES • Open Pitch Extruded Convuluted Hose of PTFE



## Construction

The WCO series is constructed of **extruded seamless** vacuum-formed white tube of open-pitch convoluted PTFE Teflon®. The BCO series consists of black conductive tubing for static dissipative purposes. Both are protected by high coverage stainless steel braid. The internal profile of the hose has been formed to support high flow rates and the helical design aids in self draining. All fittings have been specially designed for use on the hose to increase the service life of the assembly.

**Polypropylene braid cover is also available. Please contact the factory for additional information.**

## Applications

- Chemical Transfer
- Acid Transfer
- Thermal cycling or steam applications
- Tire mold equipment
- Steam
- Fill Lines
- Air compressors
- Applications requiring high flexibility
- Tank Truck
- Impulse applications

## Benefits

- Open pitch aids self-draining and cleaning of hose.
- Suitable for thermal cycling or steam applications - will not delaminate.
- Flexible design for easy installation.
- Steam cleanable.
- Light weight per foot.
- Can be autoclaved.
- High pressure ratings.
- Long life impulse.
- Temperature Rating: -65°F (-54°C) to +450°F (+230°C)

\*All pressures and vacuum ratings calculated at 70°F. \*Consult factory for vacuum ratings at higher temperatures. For applications involving higher temperatures, please consult the factory.

Part Number		Nominal Hose Size		Max. Working Pressure	Min. Burst Pressure	Vacuum Rating*	Min. Bend Radius	Approx. Weight Per Foot
White	Black	ID	OD					
WCO-06	BCO-06	0.37"	0.56"	1850 PSI	7400 PSI	28"	2.0"	.23 lbs.
WCO-08	BCO-08	0.50"	0.75"	1500 PSI	6000 PSI	28"	3.0"	.27 lbs.
WCO-12	BCO-12	0.75"	1.01"	1300 PSI	5200 PSI	28"	3.5"	.43 lbs.
WCO-16	BCO-16	1.00"	1.30"	1000 PSI	4000 PSI	28"	4.0"	.63 lbs.
WCO-20	BCO-20	1.25"	1.57"	900 PSI	3600 PSI	28"	4.5"	.75 lbs.
WCO-24	BCO-24	1.50"	1.89"	700 PSI	2800 PSI	28"	4.5"	.88 lbs.
WCO-32	BCO-32	2.00"	2.38"	500 PSI	2000 PSI	28"	5.0"	1.11 lbs.

# CONVOLUTED & JACK-CHEM FITTINGS

US Hose manufactures and inventories over 500 sizes and styles of fittings. Fitting materials consist of carbon steel, stainless steel, combination, and polypropylene.

We will manufacture custom fittings to your specifications. Contact our customer service department for more information about this service.

## THREADED FITTINGS

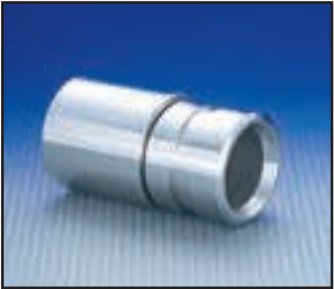
**Male Pipe Hex**



**Female JIC 37°**



**Butt Weld/Victaulic\*\***



Part #	Fitting Material	Part #	Fitting Material	Part #	Fitting Material
10	Carbon Steel	30	Carbon Steel	91	Stainless Steel
20	Stainless Steel	40	Stainless Steel		
26	Combination	45	Combination		

\*Special Fittings - Please consult the factory for pricing and availability.

\*\*Pipe is standard, tube available. Please specify.

## I-LINE FITTINGS

**Male I-Line**



**Female I-Line**



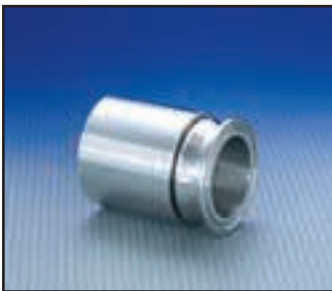
Part #	Fitting Material
98	Stainless Steel

Part #	Fitting Material
99	Stainless Steel

## SANITARY

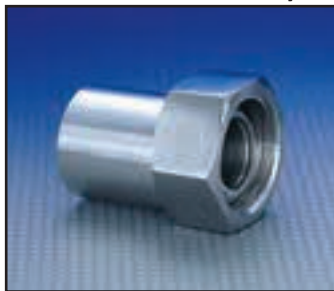
**NEW**

**Sanitary**



Part #	Fitting Material
70	Stainless Steel

**Bevel Seat Sanitary**



Part #	Fitting Material
69	Stainless Steel

**Mini Sanitary**



Part #	Fitting Material
71	Stainless Steel

**Sanitary Butterfly Valve Adapter**



Part #	Fitting Material
N3	316 Stainless steel Seat ring : EPDM

Other sanitary fittings available - contact the factory for additional fitting information.

Consult factory for other styles.

# CONVOLUTED & JACK-CHEM FITTINGS

## CAM & GROOVE

Male C & G



Part # 73 Fitting Material Stainless Steel

Female Rigid C & G



Part # 83 Fitting Material Stainless Steel

Encapsulated C & G



Part # 88 Fitting Material Stainless Steel

Encapsulated C & G



Part # 85 Fitting Material Stainless Steel

## FLANGES

Flange Retainer



Part # 50 Fitting Material Stainless Steel  
Part # 55 Fitting Material Combination

PFA Encapsulated Flange Retainer



Part # 60 Fitting Material Stainless Steel  
Part # 65 Fitting Material Combination

## COMPRESSION

Tube Stub for Instrumentation Fitting\*



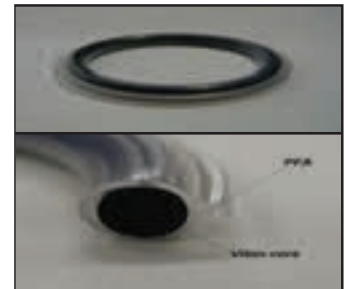
Part # 48 Fitting Material Stainless Steel

\*Please consult the factory for pricing & availability.

## SEALS

**NEW**

Super PFA Seal



Part # 88 PFA Encapsulated Viton

\*Please consult with factory for sizes, o-ring material and availability.

## POLYPROPYLENE FITTINGS

Male Pipe



Part # P20 Fitting Material Polypropylene  
Stainless Steel Collar

Sanitary



Part # P70 Fitting Material Polypropylene  
Stainless Steel Collar

Female C & G



Part # P83 Fitting Material Polypropylene  
Stainless Steel Collar

Male C & G



Part # P73 Fitting Material Polypropylene  
Stainless Steel Collar

Polypropylene fittings have a pressure rating of 120 PSI and temperature rating of up to 180°F.

# JACK-FLEX • Heavy Wall Hose of Convuluted PTFE with Flared-Tube



## Construction

Jack-Flex is constructed from convoluted, heavy wall, seamless extruded white or black conductive PTFE tubing locked in a stainless steel braid. It offers the latest in hoses lined with PTFE with flared tubing. In this process, the convoluted tubing is passed through the flange retainer, and flared over the face of the flange, effectively isolating the flange from the transfer chemical. Jack-Flex is ideal for situations where internal corrosion of the fitting and contamination of the chemical is not tolerable.

## Applications

- Thermal Cycling
- Transfer of almost all chemicals
- Acid Transfer
- Vibration Elimination
- Sanitary Applications
- Short Assembly Specification
- Applications requiring high flexibility

Available as factory-built and tested assemblies only.

*Polypropylene braid cover and polypropylene flanges are also available. Please contact the factory for additional information.*

## Benefits

- Internal corrosion of fittings eliminated.
- No metallic contamination of transfer chemical from fitting.
- Simplified installation - no gaskets required. Seal is made on flare.
- Helical design of hose aids draining and cleaning.
- Suitable for thermal cycling or steam applications - will not delaminate.
- Reduced energy losses through fitting gives higher flow rates.
- Eliminates crevice corrosion from flange insert in hose.
- Temperature Rating: -65° F (-54°C) to +450°F (+230°C)

Part Number		Nominal Hose Size		Maximum Working Pressure	Minimum Burst Pressure	Minimum Bend Radius
White	Black	I.D.	O.D.			
JF-12	JFB-12	0.78"	1.08"	425 PSI	1700 PSI	3.0"
JF-16	JFB-16	0.97"	1.36"	350 PSI	1400 PSI	4.0"
JF-20	JFB-20	1.32"	1.70"	330 PSI	1350 PSI	5.5"
JF-24	JFB-24	1.49"	1.85"	275 PSI	1100 PSI	7.0"
JF-32	JFB-32	1.92"	2.43"	250 PSI	1000 PSI	8.5"
JF-48	JFB-48	2.91"	3.80"	100 PSI	400 PSI	12.0"
JF-64	JFB-64	3.92"	4.95"	100 PSI	400 PSI	18.0"

All pressures calculated at 70°F. For applications involving higher temperatures, please contact the factory.

## Construction

The construction of an MTLC hose begins with flanged metal hose braided with stainless steel. A smooth inner liner of extruded PTFE is inserted into the hose, locked in place, and flared over the flange faces. This PTFE liner is stationary and will not move within the hose. Vent holes in the ends prevent gas build-up between layers.

*Flanges for assemblies on pages 16-17 are available in carbon steel, 304 or 316 stainless steel.*



## Applications

- Acid Transfer
- Chemical Transfer
- Generally suitable for in-plant applications
- Vibration elimination in piping systems
- Large diameter smooth bore
- Slight misalignment in plastic or lined piping systems

Available as factory-built and tested assemblies only.

## Benefits

- PTFE protection against chemical attack throughout the entire assembly length.
- Smooth liner - no entrapment areas.
- High flow rates.
- Easily cleaned.
- Long flexing life.
- Offers ruggedness in service.
- Temperature Rating: -65°F (-54°C) to +350°F (+176°C)

Part Number	Nominal Hose Size		Max. Working Pressure*	Min. Burst Pressure	Vacuum Rating (HG)*	Approx. Weight Per Foot
	I.D.	O.D.				
MTLC-16	1.00"	1.64"	500 PSI	2000 PSI	26"	2.00 lbs.
MTLC-24	1.50"	2.33"	400 PSI	1600 PSI	26"	3.86 lbs.
MTLC-32	2.00"	2.88"	300 PSI	1200 PSI	24"	5.00 lbs.
MTLC-48	3.00"	3.94"	200 PSI	800 PSI	24"	5.25 lbs.
MTLC-64	4.00"	4.98"	150 PSI	600 PSI	20"	5.60 lbs.
MTLC-96	6.00"	7.00"	150 PSI	600 PSI	20"	13.00 lbs.
MTLC-128	8.00"	9.10"	125 PSI	500 PSI	20"	20.00 lbs.
MTLC-160	10.00"	11.20"	100 PSI	400 PSI	20"	26.00 lbs.
MTLC-192	12.00"	13.22"	90 PSI	360 PSI	20"	34.50 lbs.

\*All pressures and vacuum ratings calculated at 70°F. **Please consult factory regarding flexibility restrictions**

# PROTECTIVE HOSE COVERINGS

Jackson offers several types of protective hose coverings to help extend the service life of our Fluoropolymer hoses.



## SPRING GUARD

To prolong the life of hose lines that are exposed to rugged operating conditions, such as severe flexing, Spring Guard reduces kinking and protects the hose from abrasion and rough handling.



## SILICONE FIRESLEEVE

This fiberglass sleeving has a coating of silicone rubber bonded to it which offers flame resistance that will protect the hose from extreme temperature conditions.



## HEAT SHRINK TUBING

To minimize hose O.D., heat shrinkable tubing is used in applications where cleanliness is essential, such as food and pharmaceutical processing. This provides easy cleaning of the outer hose surface.



## HYPALON

This rubber covering offers protection against extreme environmental exposure, and is ideal where continuous handling is involved, as in loading and unloading operations.



## ARMOR

A highly flexible heavy duty metal casing to protect the hose against severe handling abuse and overbending. This can be applied over the entire length or in short sections at the end connection.



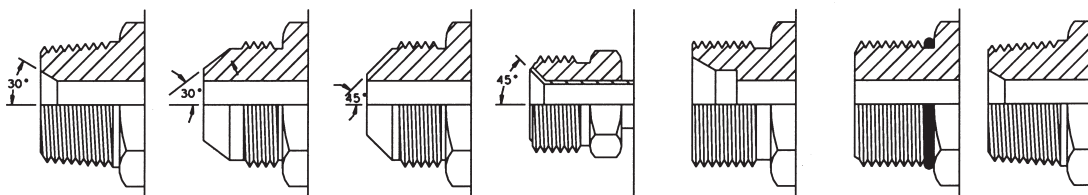
## NYLON

Woven from thousands of nylon filaments into an abrasion-resistant sleeve, the nylon cover extends individual hose life in severe abrasive environments. As it is scuffed and worn, its filaments frizz, forming an even thicker, more protective shield.

Contact Customer Service for more information about protective hose coverings.

# STANDARD THREAD & FLANGE SIZES

## Standard Thread Sizes



Dash Size	Tube O.D.	NPTF/NPSM Pipe	SAE 37° Flare	SAE 45° Flare	SAE 45° Inverted Flare	SAE Flareless	SAE O-Ring	BSPT/BSPP Pipe
2	1/8	1/8-27	5/16-24		5/16-28	5/16-24	5/16-24	1/8-28
3	3/16		3/8-24		3/8-24		3/8-24	
4	1/4	1/4-18	7/16-20	7/16-20	7/16-24	7/16-20	7/16-20	1/4-19
5	5/16		1/2-20	1/2-20	1/2-20	1/2-20	1/2-20	
6	3/8	3/8-18	9/16-18	5/8-18	5/8-18	9/16-18	9/16-18	3/8-19
8	1/2	1/2-14	3/4-16	3/4-16	3/4-18	3/4-16	3/4-16	1/2-14
10	5/8		7/8-14	7/8-14	7/8-18	7/8-14	7/8-14	5/8-14
12	3/4	3/4-14	1-1/16 - 12	1-1/16 - 14	1-1/16 - 16	1-1/16 - 12	1-1/16 - 12	3/4-14
14	7/8		1-3/16 - 12	1-1/4 - 12	1-3/16 - 16	1-3/16 - 12	1-3/16 - 12	
16	1	1 - 11-1/2	1-5/16 - 12			1-5/16 - 12	1-5/16 - 12	1-11
20	1-1/4	1-1/4 - 11-1/2	1-5/8 - 12			1-5/8 - 12	1-5/8 - 12	1-1/4 - 11
24	1-1/2	1-1/2 - 11-1/2	1-7/8 - 12			1-7/8 - 12	1-7/8 - 12	1-1/4 - 11
32	2	2 - 11-1/2	2-1/2 - 12			2-1/2 - 12	2-1/2 - 12	2-11
40	2-1/2	2-1/2 - 8	3-12					
42	3	3-8	3-1/2 - 12					

## Standard Flange Sizes

Pipe Size	150 LB FLANGE				300 LB FLANGE			
	No. of Holes	Diameter of Holes	Bolt Circle	Outside Diameter	Number of Holes	Diameter of Holes	Bolt Circle	Outside Diam.
1/2	4	5/8	2-3/8	3-1/2	4	5/8	2-5/8	3-3/4
3/4	4	5/8	2-3/4	3-7/8	4	3/4	3-1/4	4-5/8
1	4	5/8	3-1/8	4-1/4	4	3/4	3-1/2	4-7/8
1-1/4	4	5/8	3-1/2	4-5/8	4	3/4	3-7/8	5-1/4
1-1/2	4	5/8	3-7/8	5	4	7/8	4-1/2	6-1/8
2	4	3/4	4-3/4	6	8	3/4	5	6-1/2
2-1/2	4	3/4	5-1/2	7	8	7/8	5-7/8	7-1/2
3	4	3/4	6	7-1/2	8	7/8	6-5/8	8-1/4
4	8	3/4	7-1/2	9	8	7/8	7-7/8	10
5	8	7/8	8-1/2	10	8	7/8	9-1/4	11
6	8	7/8	9-1/2	11	12	7/8	10-5/8	12-1/2
8	8	7/8	11-3/4	13-1/2	12	1	13	15
10	12	1	14-1/4	16	16	1-1/8	15-1/4	17-1/2
12	12	1	17	19	16	1-1/4	17-3/4	20-1/2

**NOTICE:** The information and data contained in this *Flexible Hose Solutions*® catalog are the result of years of our experience and research in flexible hose of Teflon®. As such, it is the best information and data available to us as of the date of printing. All information and data contained herein are subject to change (without notice) at any time. Should you be unable to determine a specification for a particular application, we solicit receiving details describing the application so that we may make a recommendation. Because we do not supervise or control the installation and use of our products, we cannot be responsible for their performance or for the improper application and usage of the data.

# CHEMICAL RESISTANCE DATA

Material Compatibility Key: 1. Excellent 2. Acceptable 3. Not Recommended 0. No Information, Test Before Using

Chemical	Teflon	Fitting Material				Effusion	Chemical	Teflon	Fitting Material				Effusion
		CS	304SS	316SS	Brass				CS	304SS	316SS	Brass	
Acetaldehyde	1	1	1	1	1	B	Beet Sugar Liquors	1	1	1	1	0	
Acetic Acid Glacial	1	0	2	2	0		Benzene	1	1	1	1	1	
Acetic Acid 30%	1	3	2	2	3		Benzenesulfonic Acid	0	3	0	2	0	
Acetic Anhydride	1	3	2	2	3		Benzaldehyde	1	1	0	0	0	
Acetone	1	1	1	1	1		Benzine	1	1	1	1	1	B
Acetylene	1	0	1	1	2	C	Benzyl Alcohol	1	1	1	1	0	
Acrylonitrile	1	1	1	1	0		Benzyl Benzoate	1	1	1	1	0	
Alum Ammonium or Potassium	1	3	2	2	3		Benzyl Chloride	1	1	0	0	0	
Aluminum Acetate	1	0	1	1	3		Bismuth Carbonate	1	1	1	1	0	
Aluminum Bromide	1	3	2	2	3		Black Sulphate Liquor	1	1	1	1	0	
Aluminum Chloride	1	3	2	2	3		Blast Furnace Gas	1	1	1	1	1	C
Aluminum Fluoride	1	3	2	2	3		Borax	1	2	1	1	2	
Aluminum Hydroxide	1	0	1	1	1		Bordeaux Mixture	1	0	1	1	0	
Aluminum Nitrate	1	3	1	1	0		Boric Acid	1	3	2	1	3	
Aluminum Salts	1	0	2	2	0		Bunker Oil	1	1	1	1	1	
Aluminum Sulfate	1	3	3	2	3		Butadiene	1	0	1	1	1	
Ammonia, Anhydrous	1	1	1	1	0		Butane	1	1	1	1	1	C
Ammonia, Aqueous	1	0	1	1	3		Butter Oil	1	1	1	1	1	
Ammonium Carbonate	0	1	1	1	0		Butyric Acid	1	3	1	1	2	
Ammonium Chloride	1	0	2	2	3		Butyl Acetate	1	2	1	1	1	
Ammonium Hydroxide	1	2	1	1	3		Butyl Alcohol	1	1	1	1	1	
Ammonium Metaphosphate	1	1	1	1	0		Butyl Amine	0	1	1	1	1	
Ammonium Nitrate	1	1	1	1	3		Butyl Carbitol	1	1	1	1	1	
Ammonium Nitrite	0	0	1	1	0		Butyl Stearate	1	1	1	1	1	
Ammonium Persulfate	0	0	1	1	0		Butyl Mercaptan	1	0	1	1	0	
Ammonium Phosphate	1	3	2	1	0		Butyraldehyde	1	0	0	0	1	
Ammonium Sulphate	1	1	1	1	3		Calcium Acetate	1	1	1	1	1	
Ammonium Thiocyanate	1	1	1	1	0		Calcium Bisulfate	1	0	2	1	3	
Amyl Acetate	1	3	1	1	1		Calcium Bisulfite	1	0	1	1	0	
Amyl Alcohol	1	1	1	1	1		Calcium Carbonate	1	1	1	1	1	
Amyl Chloride	1	0	1	1	0		Calcium Chlorate	1	0	2	1	0	
Amyl Chloronaphthalene	1	0	1	1	0		Calcium Chloride	1	3	2	1	2	
Amyl Naphthalene	1	0	1	1	0		Calcium Hydroxide	1	3	3	1	2	
Aniline	1	2	1	1	3		Calcium Hypochlorite	1	0	3	2	3	
Aniline Dyes	1	3	1	1	0		Calcium Nitrate	1	1	1	1	1	
Aniline Hydrochloride	1	0	3	3	3		Calcium Silicate	1	1	1	1	1	B
Animal Fats	1	1	1	1	0		Calcium Sulfate	1	1	1	1	1	
Aqua Regia	1	0	3	3	0		Calcium Sulfide	1	1	1	1	0	
Arsenic Acid	1	2	0	1	0		Cane Sugar Liquors	1	1	1	1	2	
Askarel	0	1	1	1	1		Carbolic Acid	1	3	1	1	3	
Asphalt	1	1	1	1	2		Carbon Dioxide	1	1	1	1	1	A
Barium Carbonate	1	2	1	1	1		Carbon Disulfide	0	2	1	1	2	
Barium Chloride	1	3	1	1	2		Carbonic Acid	1	3	1	1	3	
Barium Hydroxide	1	2	1	1	0		Carbon Monoxide	1	1	1	1	1	C
Barium Sulfate	1	1	1	1	2		Carbon Tetrachloride	1	3	2	2	2	
Barium Sulfide	1	3	1	1	3		Castor Oil	1	1	1	1	1	
Beer	1	2	1	1	1		Caustic Soda	1	2	1	1	3	
							Cellosolve, Acetate	1	1	1	1	0	

# CHEMICAL RESISTANCE DATA

Material Compatibility Key: 1. Excellent 2. Acceptable 3. Not Recommended 0. No Information, Test Before Using

Chemical	Teflon	Fitting Material				Effusion	Chemical	Teflon	Fitting Material				Effusion
		CS	304SS	316SS	Brass				CS	304SS	316SS	Brass	
Cellosolve, Butyl	1	1	1	1	0		Dioctyl Phthalate	1	1	1	1	1	
Cellulube	1	1	1	1	1		Dioxane	1	1	1	1	1	
Chlorine, Gaseous, Dry*	*	2	3	3	2	C	Dipentene	1	1	1	1	1	
Chlorine, Gaseous, Wet*	*	3	3	3	3	B	Ethanolamine	1	1	1	1	1	
Chlorine Trifluoride	0	3	0	0	0	C	Ethyl Acetate	1	1	1	1	1	
Chloroacetic	1	3	3	3	2		Ethyl Acetoacetate						
Chlorobenzene	1	1	1	1	1		Ethyl Atrylate	0	1	1	1	0	
Chlorobromomethane	1	1	1	1	1		Ethyl Alcohol	1	1	1	1	2	
Chloroform	1	1	1	1	1		Ethyl Benzene	1	1	1	1	1	
O-Chloronaphthalene	1	1	1	1	1		Ethyl Cellulose	1	1	1	1	1	
Chlorotoluene	1	1	1	1	1		Ethyl Chloride	1	2	1	1	2	
Chromic Acid	1	3	3	2	3		Ethyl Ether	1	2	1	1	1	
Citric Acid	1	3	3	1	3		Ethyl Mercaptan	1	2	0	0	2	B
Cod Liver Oil							Ethyl Pentochlorobenzene	1	2	1	1	1	
Coke Over Gas	1	1	1	1	0		Ethyl Silicate						
Copper Chloride	1	3	3	1	3		Ethylene Chloride	1	2	1	1	2	
Copper Cyanide	1	0	1	1	3		Ethylene Chlorohydrin	1	0	0	0	0	
Copper Sulfate	1	3	1	1	3		Ethylene Diamine	1	0	0	0	1	
Corn Oil							Ethylene Glycol	1	2	1	1	1	
Corn Syrup	1	1	1	1	0		Fatty Acids	1	0	1	1	0	
Cottonseed Oil							Ferric Chloride	1	3	3	3	3	
Creosote	1	2	1	1	3		Ferric Nitrate	1	3	1	1	0	
Cresol	1	2	1	1	0		Ferric Sulfate	1	3	1	1	3	
Crude Wax	1	1	1	1	1		Ferrous Chloride	1	3	1	2	2	
Cutting Oil	1	1	1	1	1		Ferrous Nitrate	1	0	1	1	0	
Cyclohexane	1	1	1	1	1		Ferrous Sulfate	1	3	1	1	2	
Cyclohexanone	1	0	1	1	0		Fluoroboric Acid	1	0	1	1	0	
Cymene	1	0	0	0	1		Formaldehyde	1	0	1	1	1	
Decalin	1	0	0	0	1		Formic Acid	1	3	1	2	1	
Denatured Alcohol	1	1	1	1	1		Freon 12	2	3	1	1	0	A
Diacetone	1	1	1	1	1		Freon 114	2	3	1	1	0	A
Diacetone Alcohol	1	1	1	1	1		Fuel Oil	1	2	2	2	1	
Dibenzyl Ether	1	1	1	1	1		Fumaric Acid	0	0	1	1	0	
Dibutyl Ether	1	1	1	1	1		Furon Furfuran	1	1	1	1	1	
Dibutyl Phthalate	1	1	1	1	1		Fufural	1	2	1	1	1	
Dibutyl Sebacate	1	1	1	1	1		Gallic Acid	1	3	1	1	0	
Dichlorobenzene	1	0	1	1	1		Gasoline	1	2	1	1	1	
Diesel Oil	1	1	1	1	1		Glauber's Salt	0	1	1	1	0	
Diethylamine	1	3	0	2	3		Glucose	1	1	1	1	1	
Diethyl Ether	1	1	1	1	1	B	Glue	1	2	1	1	3	
Diethylene Glycol	1	1	1	1	1		Glycerin	1	2	1	1	1	
Diethyl Phthalate	1	0	1	1	1		Glycols	1	1	1	1	1	
Diethyl Sebacate	1	0	1	1	1		Green Sulfate Liquor	1	1	1	1	0	
Di-Isobutylene	0	0	1	1	1		n-Hexaldehyde	1	1	1	1	1	
Di-Isopropyl Keytone	1	0	1	1	1		Hexane	1	1	1	1	1	
Dimethyl Aniline	1	0	0	0	1		Hexene	1	1	1	1	1	
Dimethyl Formamide	0	1	1	1	0		Hexyl Alcohol	1	1	1	2	0	
Dimethyl Phthalate	1	0	0	0	1		Hydraulic Oil, Petroleum	1	1	1	1	1	

# CHEMICAL RESISTANCE DATA

Material Compatibility Key: 1. Excellent 2. Acceptable 3. Not Recommended 0. No Information, Test Before Using

Chemical	Teflon	Fitting Material				Effusion	Chemical	Teflon	Fitting Material				Effusion
		CS	304SS	316SS	Brass				CS	304SS	316SS	Brass	
Hydrochloric Acid, 15%	1	3	3	3	3	B	Monoethanolamine	0	1	1	1	1	A
Hydrochloric Acid, 37%	1	3	3	3	3	B	Naphtha	1	2	1	1	1	
Hydrocarbon Acid	1	3	1	1	3		Naphthalene	1	0	1	1	0	
Hydrofluoric Acid, Concentrated	1	3	3	3	3		Napthenic Acid	1	0	2	1	0	
Hydrofluosilicic Acid	1	0	3	3	3		Natural Gas	1	1	1	1	2	
Hydrogen, Gaseous	*	1	1	1	1	C	Nickel Acetate	1	1	1	1	1	
Hydrogen Peroxide, 70%	1	3	2	1	3		Nickel Chloride	1	3	2	2	3	
Hydrogen Sulfide, Gaseous	1	3	2	1	3		Nickel Sulfate	1	0	2	1	3	
Hydroquinone	0	1	0	1	0		Niter Coke	0	3	2	1	0	
Isobutyl Alcohol	1	1	1	1	2		Nitric Acid, All Concentrations	1	3	2	2	3	
Iso Octane	1	1	1	1	1		Nitric Acid, Red Fuming	1	3	2	2	3	
Isopropyl Acetate	1	1	1	1	1		Nitrobenzene	1	1	1	1	1	
Isopropyl Alcohol	1	1	1	1	2		Nitroethane	1	0	1	1	1	
Isopropyl Ether	1	1	1	1	1		Nitrogen, Gaseous	1	1	1	1	1	
Kerosene	1	1	1	1	1		Nitrogen Tetroxide	0	0	0	2	0	
Lacquers	1	3	3	1	1		n-Octane	0	1	1	1	1	
Lacquer Solvents	1	3	3	1	1	B	Octyl Alcohol	1	1	1	1	2	
Lactic Acid	1	3	2	1	2		Oil, SAE	1	1	1	1	1	
Lard	1	1	1	1	3		Oleic Acid	1	2	2	1	2	
Lead Acetate	1	2	1	1	1		Olive Oil	1	2	2	1	2	
Lead Nitrate	0	1	1	1	0		Oxalic Acid	1	3	2	1	3	
Lime Bleath	0	3	2	1	0		Oxygen, Gaseous	1	1	1	1	1	
Linoleic Acid	1	0	0	0	0		Ozone	1	1	1	1	1	
Linseed Oil	1	2	1	1	2		Paint	1	0	1	1	1	
Lubricating Oils, Petroleum	1	1	1	1	1		Palmitic Acid	1	1	2	1	3	
Magnesium Chloride	1	3	2	1	2		Peanut Oil	1	1	1	1	1	
Magnesium Hydroxide	1	1	1	1	0		Perchloric Acid	1	0	2	1	0	
Magnesium Sulfate	1	2	1	1	1		Perchloroethylene	1	1	1	1	1	
Molic Acid	1	2	2	1	0		Petroleum	1	1	1	1	1	
Mercuric Chloride	1	3	1	1	3		Phenol	1	3	1	1	3	
Mercury	1	1	1	1	3		Phorone 1	1	1	1	1	1	
Mesityl Oxide	1	1	1	1	1		Piric Acid	1	3	1	1	3	
Methyl Acetate	1	1	1	1	1		Pinene	1	1	1	1	1	
Methyl Atrylote	0	1	1	1	1		Pine Oil	1	1	1	1	0	
Methyl Alcohol	1	1	1	1	2		Plating Solution, Chrome	1	0	3	3	0	
Methyl Bromide	1	1	1	1	1	B	Potassium Acetate	1	0	1	1	0	
Methyl Butyl Ketone	0	1	1	1	1		Potassium Chloride	1	2	2	1	3	
Methyl Chloride	1	1	1	1	1	B	Potassium Cyanide	1	2	1	1	3	
Methylene Chloride	1	1	1	1	1		Potassium Dichromate	1	0	1	1	0	
Methyl Ethyl Ketone (MEK)	1	1	1	1	1		Potassium Hydroxide, 30%	1	3	1	1	3	
Methyl Formate	1	1	1	1	1	B	Potassium Nitrate	1	3	1	1	2	
Methyl Isobutyl Ketone	1	1	1	1	1		Potassium Sulfate	1	2	1	1	2	
Methyl Methacrylate	1	1	1	1	1		Propane	1	1	1	1	1	
Methyl Salicylate	1	1	1	1	1		Propyl Acetate	0	1	1	1	1	
Milk	1	3	1	1	3		Propyl Alcohol	1	1	1	1	2	
Mineral Oil	1	1	1	1	1		Pyricine, 50%	1	0	1	1	1	
Monochlorobenzene	1	1	1	1	1		Red Oil	1	2	2	1	2	

# CHEMICAL RESISTANCE DATA

Material Compatibility Key: 1. Excellent 2. Acceptable 3. Not Recommended 0. No Information, Test Before Using

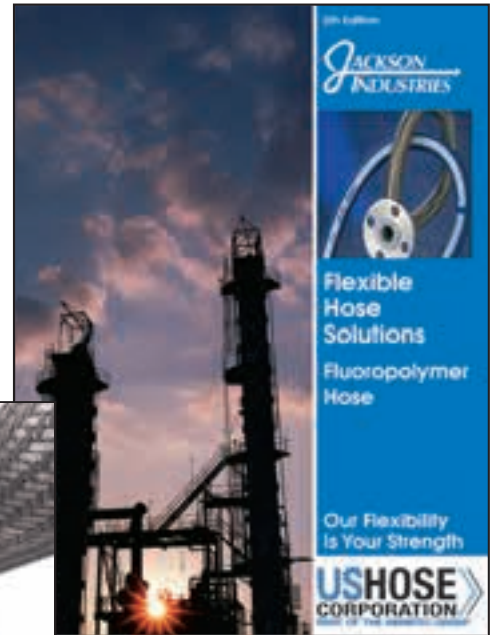
Chemical	Teflon	Fitting Material				Effusion	Chemical	Teflon	Fitting Material				Effusion
		CS	304SS	316SS	Brass				CS	304SS	316SS	Brass	
Salicylic Acid	0	0	1	1	0		Sulfur Trioxide	1	2	2	2	0	B
Salt Water	1	2	1	1	3		Sulfuric Acid, 10%	1	3	3	2	3	
Sewage	1	3	1	1	1		Sulfuric Acid, 98%	1	2	3	2	3	
Silicone Greases	0	1	1	1	1		Sulfuric Acid, Fuming	1	2	0	1	3	
Silicone Oils	0	1	1	1	1		Sulfurous Acid, 10%	1	3	2	1	3	
Silver Nitrate	1	2	1	1	2		Sulfurous Acid, 75%1	1	3	3	2	3	
Skydrol 500 & 7000	1	1	1	1	0		Tonic Acid, 10%	1	2	1	1	3	
Soap Solutions	1	1	1	1	1		Tar, Bituminous	1	1	1	1	2	
Soda Ash	1	1	1	1	2		Tartaric Acid	1	0	2	2	0	
Sodium Acetate	1	1	1	1	1		Terpineol	1	0	0	0	0	
Sodium Bicarbonate	1	2	1	1	2		Titanium Tetrachloride	0	1	2	2	3	
Sodium Bisulfite	1	1	1	1	0		Toluene	1	1	1	1	1	
Sodium Borate	1	1	1	1	0		Toluene Diisocyanate	0	0	0	0	0	
Sodium Chloride	1	2	2	1	3		Transformer Oil	1	1	1	1	1	
Sodium Cyanide	1	2	1	1	3		Transmission Fluid, Type A	1	1	1	1	1	
Sodium Hydroxide, 40%	1	2	1	1	3		Tributoxyethyl Phosphate	1	1	0	0	0	
Sodium Hypochlorite	1	3	3	2	3		Tributyl Phosphate	1	1	0	0	0	
Sodium Metaphosphate	1	3	1	1	3		Trichlorethylene	1	3	0	1	1	
Sodium Nitrate	1	1	2	2	2		Tricresyl Phospahte	1	1	0	2	0	
Sodium Perborate	1	3	1	1	3		Tung Oil	1	1	1	1	1	
Sodium Peroxide	1	3	1	1	3		Turpentine	1	0	1	1	2	
Sodium Phosphate	1	0	1	1	3		Urea Solution, 50%	1	1	1	1	0	
Sodium Thiosulfate	1	3	1	1	3		Varnish	0	2	1	1	2	
Soybean Oil	1	1	1	1	0		Vegetable Oils	1	1	1	1	0	
Stannic Chloride	1	3	0.	0	3		Versilube	1	1	1	1	1	
Steam	1	1	1	1	2	A	Vinegar	1	3	2	1	3	
Stearic Acid	1	3	2	1	3		Vinyl Chloride	1	2	1	1	3	C
Stoddard Solvent	1	2	1	1	1		Water	1	2	1	1	1	
Styrene	1	2	0	2	2		Whiskey, Wines	1	3	2	1	3	
Sucrose Solution	1	1	1	1	0		Xylene	1	2	2	2	0	
Sulfur, 200degrees F	1	2	2	1	3		Zinc Acetate	1	1	1	1	1	
Sulfur Chloride	1	3	3	2	3		Zinc Chloride	1	3	2	1	3	
Sulfur Dioxide	1	2	1	1	1	C	Zinc Sulfate	1	3	2	1	3	

## Effusion Chart Key:

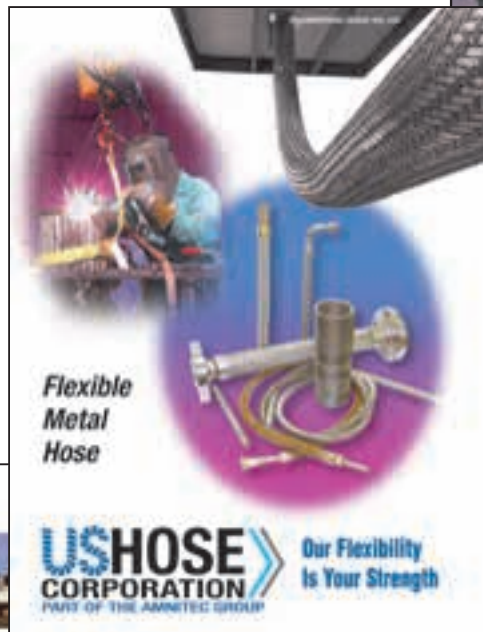
- A. Effusion will occur with potential to displace breathable air in an enclosed environment. For further information contact factory.
- B. These compounds have the capability to effuse and with certain atmospheric conditions can corrode metallic components such as braid and fittings. Applications with these compounds require using hose assemblies only in well ventilated spaces, please consult factory with questions.
- C. Chemicals in this category are in a gas phase at atmospheric pressures and at temperatures of 56°F or less. For further information on compatibility please consult factory.

# Worldwide Leader for Hose of...

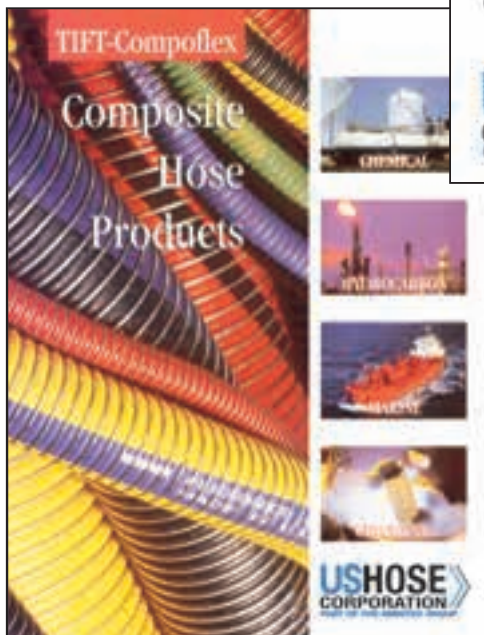
## Fluoropolymer



## Metal



## Composite



815 Forestwood Drive  
Romeoville, Illinois 60446  
815/886-1140  
800/473-0474  
Fax 815/886-4550  
E-mail: [customersupport@ushose.net](mailto:customersupport@ushose.net)  
[www.ushosecorp.com](http://www.ushosecorp.com)

12120 Beaumont Highway  
Houston, Texas 77049.U.S.A.  
888/919-0400 • Fax 281-458-7809  
281/458-0400  
E-mail: [Willcoxsales@ushose.net](mailto:Willcoxsales@ushose.net)  
[www.ushosecorp.com](http://www.ushosecorp.com)  
Group Web Page: [www.amnitech.com](http://www.amnitech.com)



Specifications subject to change without notice.  
Printed in U.S.A. ©2006 US Hose Corporation